

# adapt+

## A review of bioenergy in the East of England

Bianca Forte

Business Innovation Manager

**InCrops Enterprise Hub**

4<sup>th</sup> Annual Smart Grids & Cleanpower 2012 Conference

14 June 2012 | Cambridge | [www.cir-strategy.com/events](http://www.cir-strategy.com/events)



# Talk structure

---

adap<sup>+</sup>

1. InCrops Enterprise Hub
2. Bioenergy in the region
3. The Adapt Low Carbon Group

# InCrops Enterprise Hub

adap<sup>+</sup>

- Funded by the European Regional Development Fund and East of England Development Agency to support low carbon innovation and growth in the bioeconomy in the East of England.
- The project is managed by InCrops Ltd, a spin-out company from the UEA and which is part of The Adapt Low Carbon Group.



# InCrops Enterprise Hub

adap<sup>+</sup>

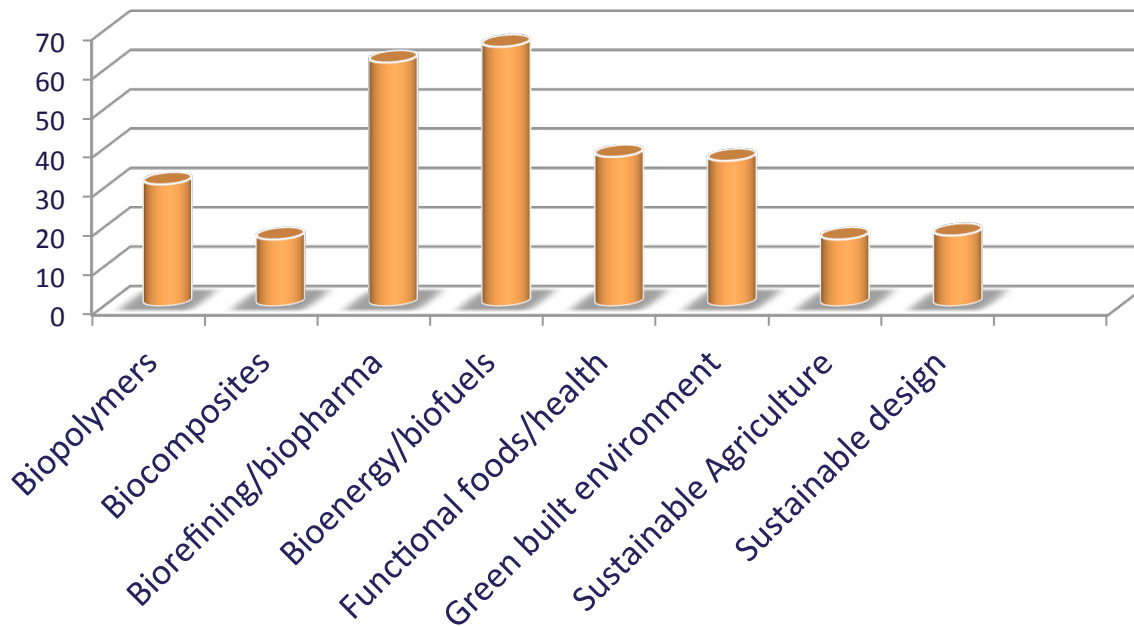
- Regional companies can access up to 14 hours of free specialist support for the **development, commercialisation and adoption** of bio-renewable products, processes and services:



# InCrops Enterprise Hub

adap<sup>+</sup>

InCrops has supported **over 270 regional businesses** since summer 2008



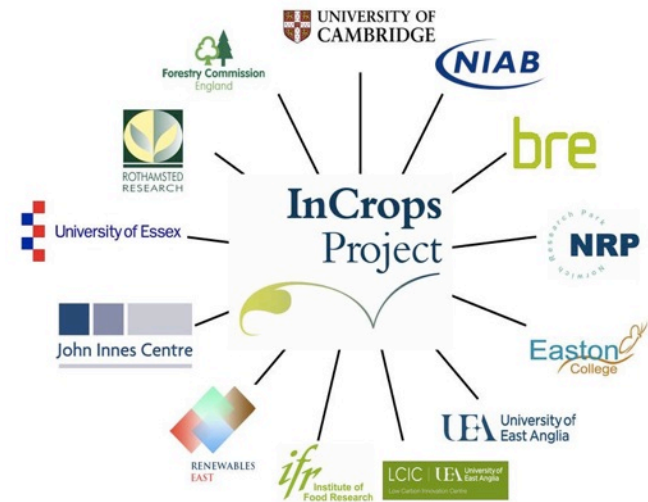
## InCrops clients include:

- Technology developers
- Technology suppliers
- Biomass suppliers
- Manufacturing companies
- Consultancy companies
- Farmers
- Land owners
- Project developers

# InCrops Enterprise Hub

adap<sup>+</sup>

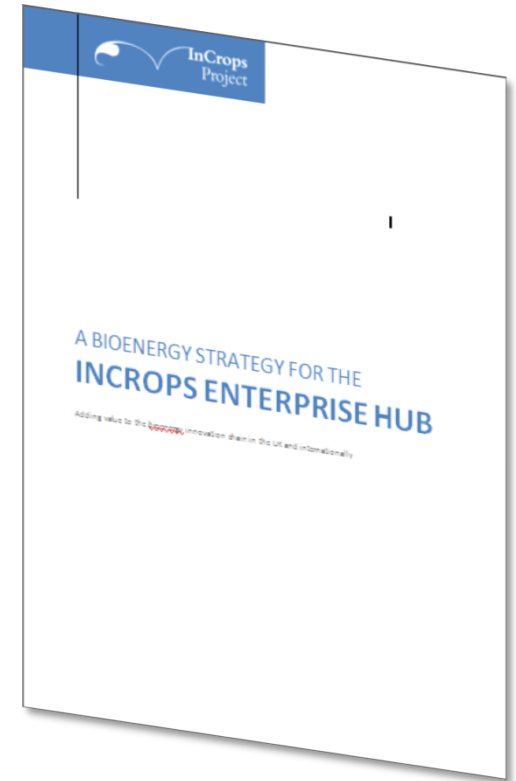
- When clients require technical or scientific support for the development or adoption of new products and processes, InCrops introduces them to academic partners.
- InCrops has facilitated over **40 industry:academia collaborations** since summer 2008.



# Bioenergy in the region

adap<sup>+</sup>

- Key areas for improvement and development and in which the region has considerable expertise:
  - Sustainable production of biomass
  - Biomass conversion processes
  - Returning nutrients to the soil
  - Negative carbon energy
  - Adding value to bioenergy systems



# Bioenergy in the region

adap<sup>+</sup>

LIGNOCELLULOSIC BIOFUELS: The HOOCH project

## BRITISH BIOALCOHOLS GROUP



- A Defra-funded project on the production of bioalcohols from lignocellulosic residues from the agri-food supply chain.
- A consortium of 14 academic research institutes and universities and industrial partners from different stages of the supply chain.

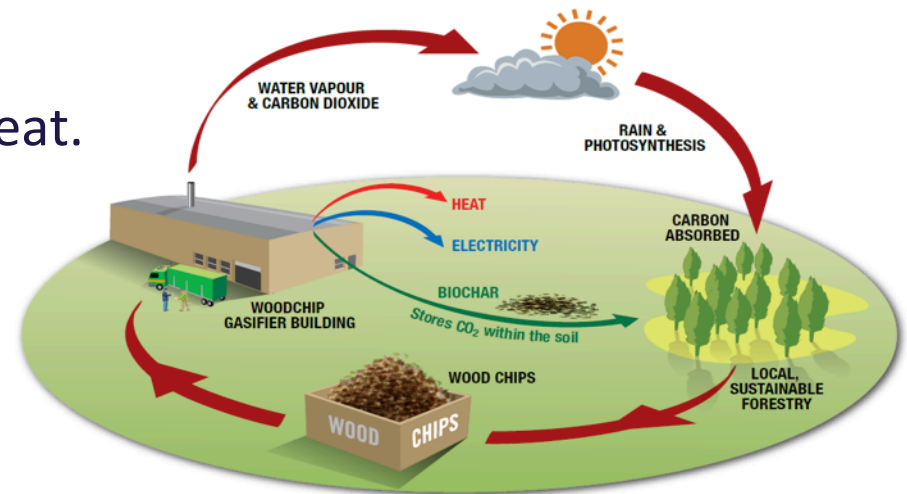


# Bioenergy in the region

adap<sup>+</sup>

## GASIFICATION: UEA Biomass Gasifier

- CHP unit capable of producing 1.4 MW electricity and 2.0 MW heat.
- Feedstock: woodchips from sustainable forestry in Norfolk.
- The plant will also generate up to 1,000 tonnes of biochar per annum.

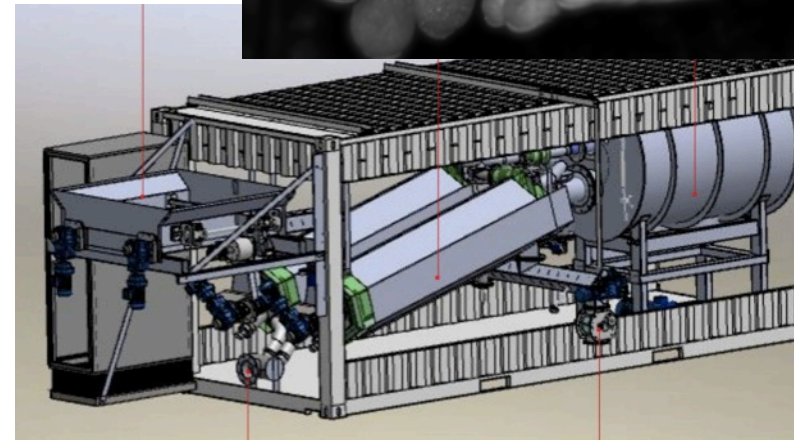


# Bioenergy in the region

adap<sup>+</sup>

## PYROLYSIS: The PYREG slow pyrolysis system

- A 500kW modular pyrolysis unit mounted inside a shipping container.
- Annual throughput rate: 1,000 to 1,200 tonnes of feedstock yielding 350 to 400 tonnes of biochar and ash.



# Bioenergy in the region

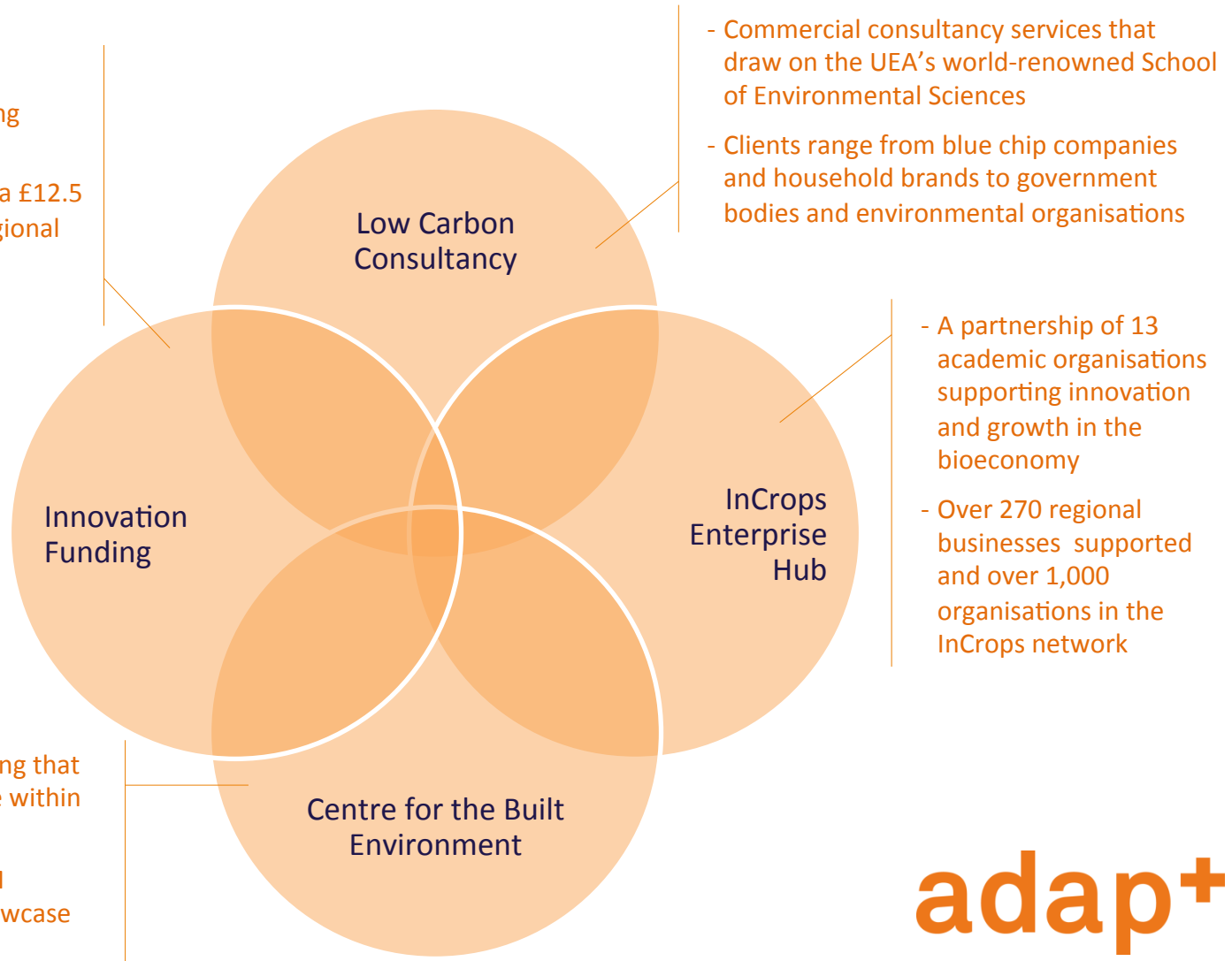
adap<sup>+</sup>

## ANAEROBIC DIGESTION: Massive potential in the East of England

- Over **36 stakeholders** in the region alone involved in or interested in this area of technology
- **17 AD plants** in operation, under construction, under planning process or under concept stage
- **16 technology suppliers and project developers** - and many others with non-regional addresses operating here

# The Adapt Low Carbon Group

- Over 7-years experience funding early-stage low carbon ideas
- **Low Carbon Innovation Fund:** a £12.5 M Venture Capital Fund for regional low-carbon businesses



**adapt<sup>+</sup>**



Please contact us for further information:

Bianca Forte

Business Innovation Manager

InCrops Enterprise Hub

[www.incropsproject.co.uk](http://www.incropsproject.co.uk)

Part of The Adapt Low Carbon Group, University of East Anglia

**M:** +44 (0)7776 471 810 | **P:** +44 (0) 1582 763 133 ext 2457 | **E:** [b.forte@uea.ac.uk](mailto:b.forte@uea.ac.uk)